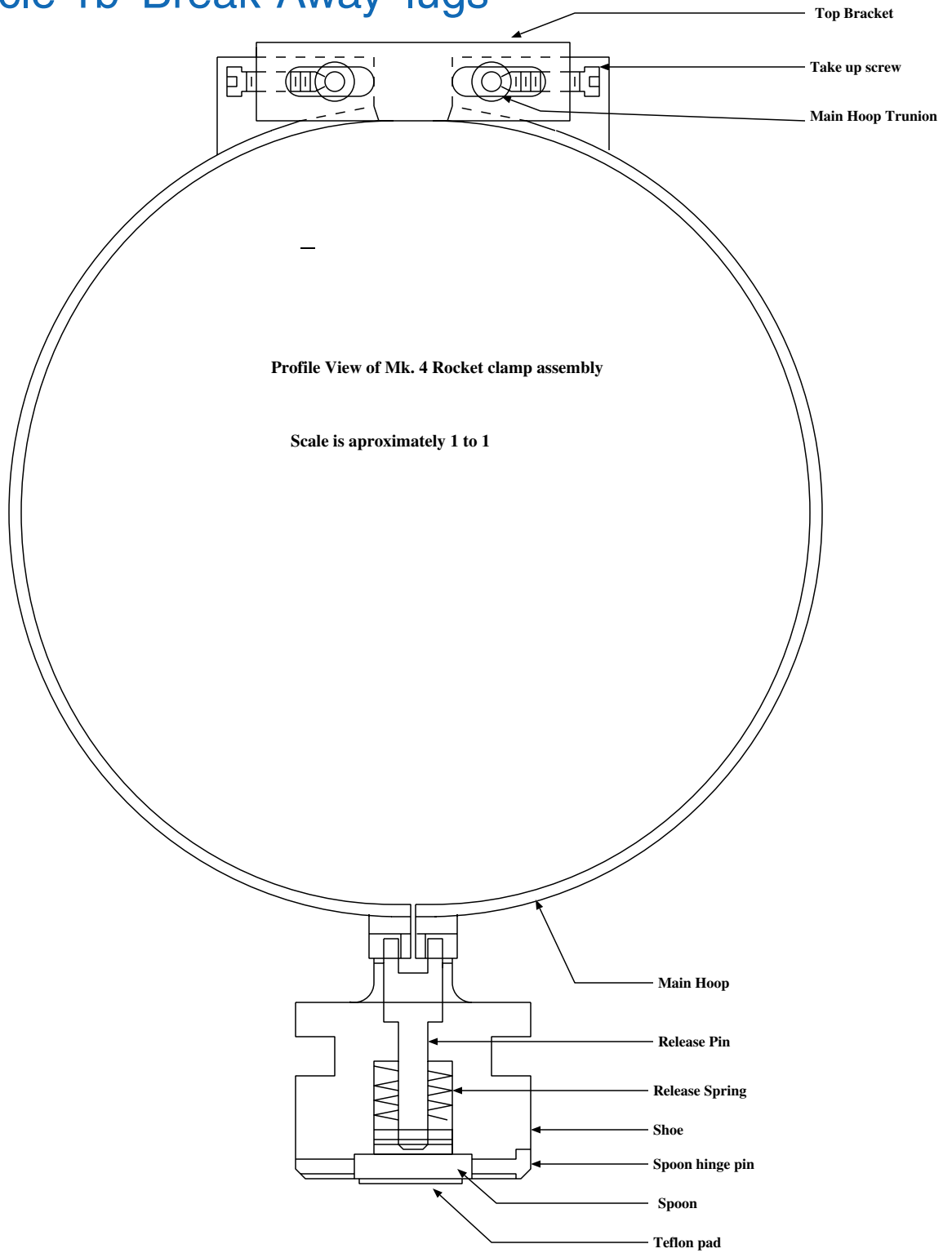
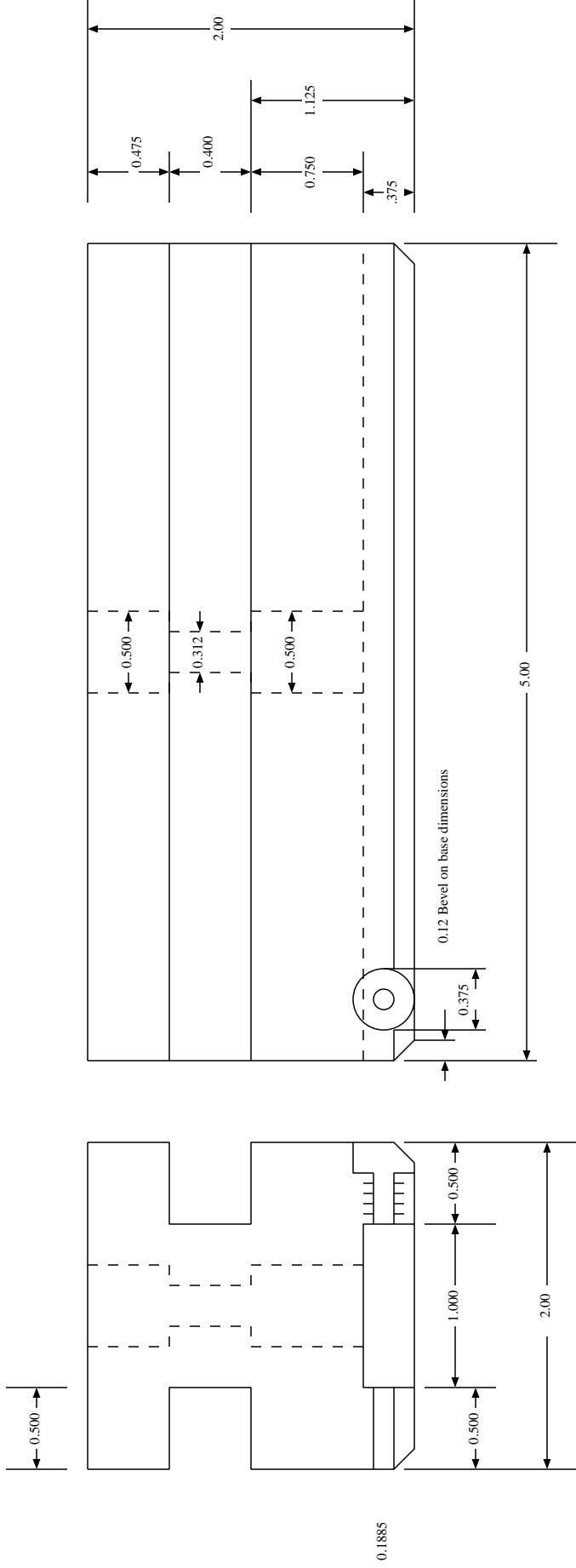


Launch Vehicle 1b 'Break-Away' lugs



Mk. 4 Rocket Clamp
Shoe

Material: Nylon, Delrin, or similar plastic

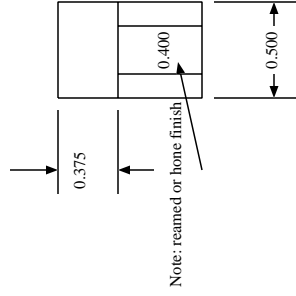
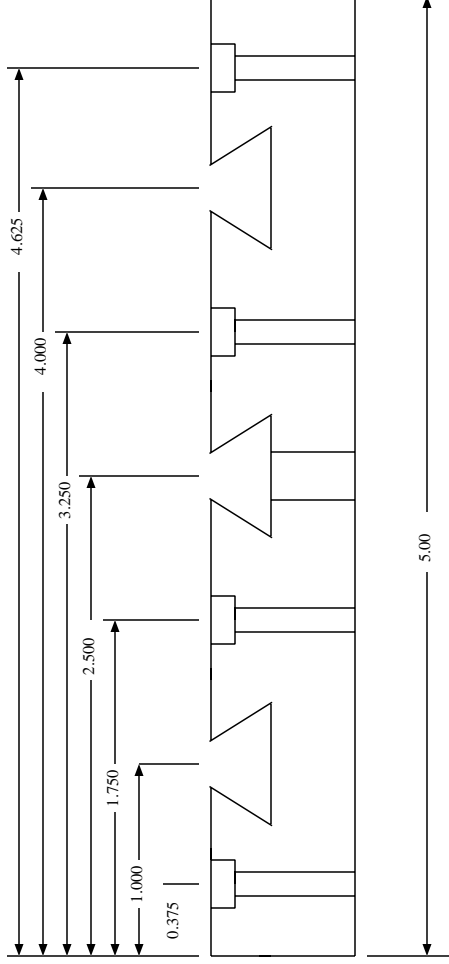


Drawing is to scale in this case.
All dimensions are in inches
Sorry if you like the metric system better.

Note: Drawing is NOT to scale

Mk. 4 Rocket Clamp
shoe top bracket

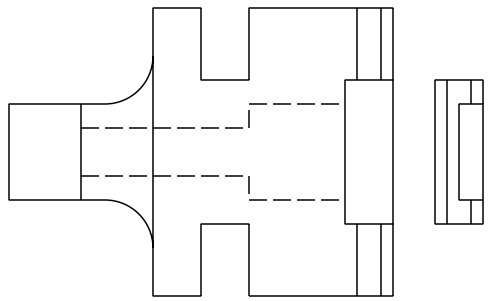
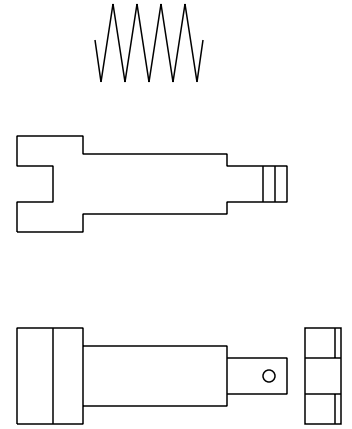
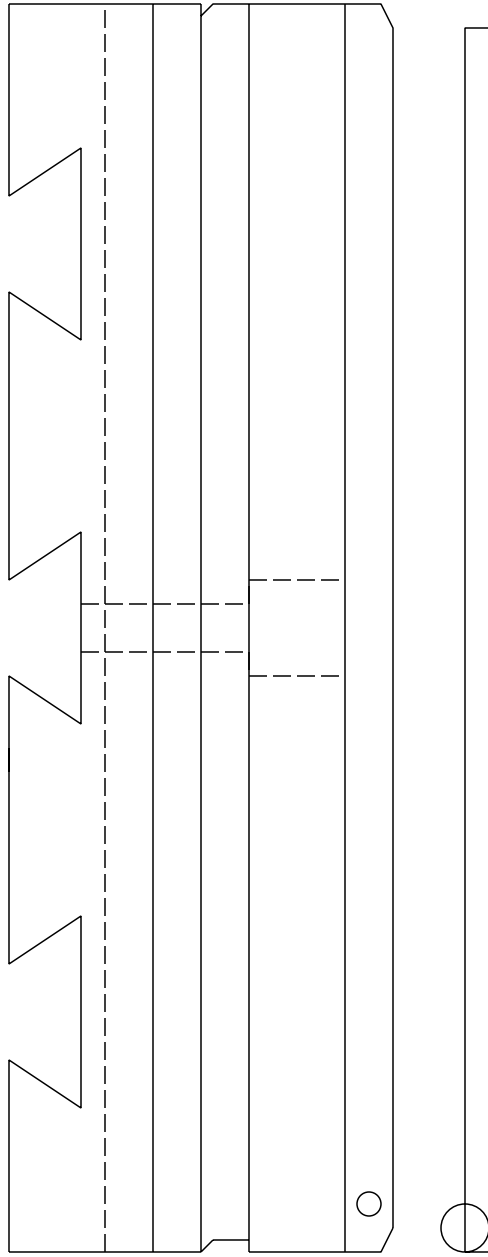
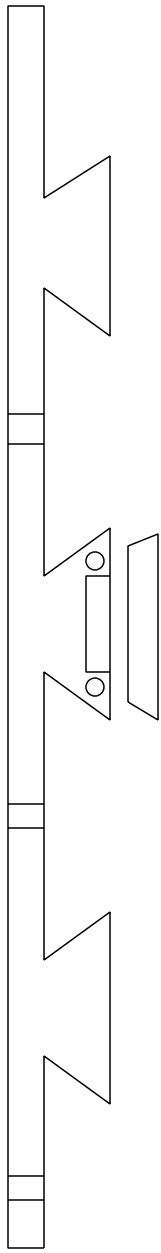
Material: 6061 T-6 Aluminum or similar alloy



Drawing is to scale in this case.

All dimensions are in inches

Sorry if you like the metric system better.



10-32 tap, four places

